

SWIFT MUSEUM
FOUNDATION, INC.
223 COUNTY ROAD 552
ATHENS, TENNESSEE 37303

OFFICE 423-745-9547
PARTS 423-744-9696
FAX 423-745-9869

WEB SITE:
SWIFTMUSEUMFOUNDATION
.ORG

EMAIL:
SWIFTMUSEUMFOUNDATION
@AOL.COM

2018

EVENT SCHEDULE

2018 SMF Raffle

Get your tickets now!!
Drawing June 9

Sun-n-Fun

April 10—15
Lakeland, FL

Swift National 2018

June 6-10
Athens, TN

EAA AirVenture

July 23-29
Oshkosh

Triple Tree

September 5-9

Red River Swift Wing

To Be Announced

West Coast Swift Natl.

September 27-30

Swift Museum Foundation, Inc.



Volume XLIX Issue #4

March 2018

Executive Director Report by Scott Anderson

I'm sure all of you will be as happy as I am to see winter come to an end and for flying season to begin!

Preparations are under way for Swift National 2018. This is a very special year as we are celebrating the **50th Anniversary** of the Swift Museum Foundation which began as the International Swift Association founded by Charlie Nelson in 1968. I wonder if Charlie would be as amazed as I am as to what his idea has become.

We will be enjoying our new **Phase Three building** made possible by Ken Coughlin and many other generous donors that realize the importance of what we are building. Swift members and aviation enthusiasts from near and far genuinely enjoy and benefit from what we have to offer.



Swift Museum Foundation Phase 3 progress being made!

As I learn more and more about our historical niche in aviation I couldn't be more proud to be a small part of it. Our Museum displays continue to expand and more are planned. We are getting many visitors who in turn send more visitors. The Swift name is getting out in the world more than ever.

The 2018 Raffle program is underway! Ticket sales began on February 8th and have already picked up a good head of steam. Who couldn't use a new engine for their airplane or \$20,000.00 cash? The odds of winning something in our raffle beat the lottery hands down! Your tax deductible donation of \$100.00 per ticket helps provide the necessary financial ability for Swift to continue to operate and support your airplanes. Contact Headquarters and let us know how many tickets you would like to have.

Globe Factory Bricks are still selling well. If you haven't gotten yours yet, don't wait too long. There are a very limited number of the original bricks left to be had. When they're gone, they're gone! Be a part of the permanent display here at the museum yourself or remember a loved one that the Swift in their life meant so much to.

Replica bricks will be on display during Swift National as well. There is still time to be a part of that if you get your order into us soon. This is a very affordable way to show your support. There are two options of either a 4"x 8" (\$150.00 ea.) or 8"x 8" (\$300.00 ea.) brick inscribed with your personal message. The plan for these bricks is a border surrounding the Original Globe Factory Flagpole located outside our new facility. It will be a

SMF Committees**Executive**

Pick Freeman
Paul Barnett
Sam Swift
Scott Anderson

Nominating

Pick Freeman
Will Roberson
Scott Anderson

Audit

Pick Freeman
Paul Barnett
Sam Swift

Finance

Sam Swift
Pick Freeman
Scott Anderson

Fund Raising

Jim "Frog" Jones

Newsletter

Pamela Nunley

Nat'l Convention/Fly-in

Paul Mercandetti
Sandy Mercandetti
Scott Anderson

Parts

Steve Wilson
Ken Coughlin
Ernie Hansen

Formation

Michael Kennedy
Sandy Mercandetti

Building

Roger Weber
Scott Anderson
Paul Barnett

IT/Web

Tracy Rhodes
Jim Jones

Aging Aircraft

Steve Wilson
Ken Coughlin
Dave Carpenter

very beautiful display when complete. Give us a call and we'll get you set up.

Another way to support your Museum is through a program called "**Amazon Smile**". If you are an Amazon Prime member you can place your orders through Amazon Smile and Amazon will make a donation to the Swift Museum Foundation when you select it as the registered organization that you choose. This donation to SMF doesn't cost you an extra penny. It's Amazon's way of helping support non-profit organizations such as ours. I'm sure many of you use Amazon, I do, so don't forget this opportunity to help Swift continue to grow. The Swift Museum Foundation is a registered eligible recipient of these donations. You already know Amazon is convenient cost effective way to shop. So help Swift and use **Amazon Smile!**

Parts Department News

We should have the new PMA power pack gaskets by the time you receive this newsletter. Complete gasket and seal kits will be on the shelf soon. More seal kits have been ordered so that there will be plenty in stock for the springtime maintenance of your Swift. Note information in the article listed later in this newsletter on how to order new PMA 2302-1 and 2302-2 Actuator Arms and Cranks at a pre-production price that your Parts Committee and Board of Directors have been working to produce.

Swift National 2018

We have a place - Athens, we have a date - **June 6-10**, we have food and beer, we have ice cream and gifts, all we need now is **YOU!!!** Attached/enclosed is your **Pre-registration** form. Please fill it out and send it in asap. There is no charge to pre-register, please do so we can get an idea of how many for the caterer etc. This is one of the most difficult aspects of putting together a fly in. It hits us hard in the pocket book if we over estimate the number of meals and my mother would kill me if we had a party and not enough food. Again, please send in your form so we can have idea on how many we can plan on.

For those FEW who will not be able to attend, **please do not forget to send in your proxy** (enclosed/attached). For those who would like to have a **VFR transponder check** done on Friday of the event, the cost is \$150.

Hotel & Car Rental Information

We have reserved a block of 53 rooms at the Comfort Inn of Athens. 423-252-8030. They are available at a great price of \$85.00 per night. This is the hotel of choice for Swift members visiting Athens. This rate includes a hot breakfast bar in the mornings and all the amenities you would expect from one of the best hotel chains. **Be sure to mention that you are with the Swift National fly-in to receive this special rate.**

Vans will be available for transportation to the hotels as usual. You can also arrange for a rental car if you wish. Contact **East TN. Rental and Leasing at 423-781-7154** and they will help you out.

We have some interesting and fun things planned for Swift National 2018. Fly outs, local trips and new forums and don't forget to sign up on your pre- registration form for your transponder check on Friday June 8th during the event. We are getting a special rate so be sure to take advantage of it. We're looking forward to seeing everyone in June!

Parts Department New

Is your beloved Swift suffering from leaking gear actuators? In response to the widespread need for the **2302-1 and 2302-2 Actuator Arms and Cranks** we are extending a 10% savings opportunity to Members interested in taking advantage of Pre-Production Pricing. The first 30 Actuator Arms and Cranks sold will be made available to Members for \$715.50 each. Retail pricing for the parts once available on the shelf will be \$795. Upon receiving Pre-Production orders for a quantity totaling 30 pieces, the Production Order will be placed with

the manufacture, estimating 60 days for production time. The funds will be placed in an account identified specifically for the **#2302 Actuator Arms and Cranks**; in the unlikely event that we do not received the minimum quantity order by June 30, 2018, 100% of the funds collected will be reimbursed.

Your support is greatly appreciated, with the continued success of our Raffle and Donations, we are anxious to be able to have Stock Orders of higher cost parts produced without having to seek Pre-Production Ordering. Contact Headquarters TODAY at 423-745-9547 to secure your "NEW" PMA 2302 Actuator Arms and Cranks!

Chairman's Comments *by Pick Freeman*

There is nothing magic about the Swift Museum Board of Directors or what we do. You as members are always invited to come to our meeting and participate. Ask questions and volunteer to be a board member. On February 17th we had our mid-winter board meeting. The meetings are conducted under Robert's Rules of Order or as close as we can decipher them and we keep them as short as we possibly can. Some can be longer if an executive session is required of board members only.

We do business of the Swift Museum for whatever is required of our organization. I'd like to bring you up to date on what we discussed in this meeting. Under unfinished business: (1) We concluded the Swift PMA or Parts Manufacturing Authority discussion. Due to the fact that no insurance company would underwrite liability insurance for a start-up aircraft parts manufacturing company, it was voted to no longer pursue getting our own PMA. (2) AirCorps Data Preservation of our technical and historical data was discussed. We are still looking into our options with AirCorps as to how we can offer this information to the membership. (3) The final design of the Swift Museum Foundation Brown Arch EAA Legacy Brick was approved. This brick will be on display this year at Oshkosh. (4) Disposition and positioning of our donated aircraft. It was reported that both aircraft are now in Athens and being evaluated for their use. (5) The MT propeller designed for the Swift was also reported on as to the progress of that project. It seems that the FAA is requiring a bit more information to approve the STC but our committee is working diligently and we should be close to the conclusion of this long term effort to provide a better performing propeller for the 145 powered Swifts. (6) Conclusion and disposition of the Preferred Altitude contract was discussed. This was a contract to allow a specific vendor to sell Swift products on our behalf, i.e. hats, patches, jewelry, and shirts. It was decided that there was not enough benefit to Swift to engage in this endeavor. And this is just the unfinished business the board discussed at the last meeting.

Under new business (1) We discussed our plan for Swift PMA parts production. (2) We discussed forming two new committees of I.T. Web and fund raising. (3) An update on the 2018 Swift National fly-in was given by the fly in committee. (4) The 2019 Raffle was discussed, and a plan was made. (5) Funds are being raised for a Paul Barbour Memorial brick.

If you would like to contribute to this Globe Factory Brick in Paul's honor contact Jim "Frog" Jones or Headquarters. (6) And last but not least the schedule for the next Board of Directors meeting. My hopes going forward are the meetings to be short as possible and the members send in more articles for the newsletter. Just write little stories or vignettes or questions about the Swift. Maybe, go back to the typed mimeographed pages and dig out what Charlie Nelson said fifty years ago. My five years on the Board is expiring but I cannot depart without imploring each and every Swift pilot to fly safely. Stay level in the turns and keep the blue side up.

Regards,
Pick Freeman

Board of Directors

Chairman

Pickens Freeman
5512 Crowders Cove Lane
Lake Wylie, SC 29710
pickfreeman@bellsouth.net

Vice Chairman

Paul Barnett
P. O. Box 546
Brookhaven, MS 39602
pbarnett@pbnissan.com

Scott Anderson

779 Hwy. 39 East
Athens, TN 37303
dsanderson08@aol.com

Mark Holliday

P. O. Box 243
Lake Elmo, MN 55042
markh85@aol.com

John Johnson

12 Flight Alley
Sequim, WA 98382
smokeys49@hotmail.com

Pat Moore

2574 Buffalo Street
White Bear Twp., MN 55110
swift49@gmail.com

Sam Swift

7057 Cotton Blossom Lane
Nashville, TN 37221
flyboycpa@aol.com

Bryce Ulmer

75 Teal Court
Locust Grove, GA 30248
bryce.d.ulmer@delta.com

Roger Weber

757 Luscombe Street
Independence, OR 97351
rogermichaelweber@hotmail.com

Executive Director

Scott Anderson

779 Highway 39 East
Athens, TN 37303
swiftmuseumfoundation@aol.com

Honorary President

Jim "Frog" Jones

1061 Devon Drive
Madison, GA 30650
jim@dixie-industrial.com

Historian

Kenneth B. Coughlin, Jr.

Oklahoma City, OK
swiftlyken@aol.com

Founded by

Charles E. "Charlie" Nelson
1968

President's Comments by Jim Jones

The Swift Museum Foundation is celebrating its 50th anniversary this year.... An ad for interest was placed, the first fly-in was held in Athens, GA (KAHN), and the first newsletter was published in 1968, thus The International Swift Association was formed. Several of the original charter members are still active in the organization and continue to fly their Swifts. Swift National 2018 will be held at Athens, TN (KMMI). Hopefully, as many as possible, of the original members will be able to attend this celebration of the 50th Anniversary. The name was changed in 1977 with forming of the Swift Museum Foundation, Inc.

Look what has been achieved in the fifty year history of the Swift Association/Swift Museum Foundation, Inc.

- Monthly newsletter to each member.
- Purchasing the type certificate, engineering data, tooling and spare parts from Univair.
- Acquiring from Saudi Arabia the salvageable T-35's and spare parts.
- Restoration of the T-35A
- Supplying members with the parts necessary to keep their Swifts flying.
- Forming of the Swift Museum Foundation and acquiring the Johnson Rocket, the first and last produced Swifts and other original Swifts.
- Building of a new facility to house SMF office, the parts department, drawings, engineering data, tooling and display the collection of Swifts and T-35A.
- Holding of the annual Swift National Convention/Fly-In.

All that has been accomplished could not have been done had it not been for the continuous support of the Swift Museum Foundation Members. This support has come through volunteerism (both on site and local Swift Wings), monetary donations, donations of aircraft, purchasing of raffle tickets, supporting silent auctions, donation of used parts. The Swift Museum Foundation is a 501(C) 3, non-profit organization. The life's blood of this type organization is fundraising and donations. To give an example of the revenue inflow of the SMF the numbers from 2017 will be used, most all of this was member supported. This will be a snapshot of the financials, for detailed information you may contact Scott Anderson, Executive Director to obtain a complete copy of the yearend financial report.

- Parts Sales \$72,000.00/Profit \$35,000.00.
- Direct Public Support/Brick Sales, Building Fund Donations/Phase 3 Door \$55,100.00.
- General Donations \$8,600.00.
- Raffle Tickets Sales/\$59,800.00/Profit \$35,305.71.
- Membership dues \$21,594.15.
- National Convention Income, Registration, Banquet, Food, Store Sales \$11,385.25.
- National Convention Door Prize & Silent Auction \$13,977.00.

The approximate percentage revenue of sales for parts was 29%; the balance was member supported donations of 71%. The purpose of the above information is to encourage those of you have not supported the SMF with donations, is ask you to consider donating any way you are financially able. Consider making a monthly pledge, donating appreciated stock in which you have a low cost basis. If you donate stock you will not be required to pay taxes on the appreciated value, yet you get the full deduction of the value of the donation. You may want to make a yearend donation. Consider end of life legacy gift to the Swift Museum Foundation, it can be any value you set from \$1,000.00 to as high as you wish to go, consider donating your Swift as a legacy gift to be sold or raffled. In the payment of your dues consider rounding up to \$100.00. There are still factory Bricks and Replica Bricks for Sale, if you have not yet purchased one please do so. The 2018 Raffle is under way, please checkout tickets to sell in your local area to those in your sphere of influence, if not at least purchase as many as you feel comfortable. Think about what the Swift Museum Foundation means to you, is it parts only, social aspect, flying with like-minded pilots, ownership of a historical/classic aircraft other values and make a donation to support the organization that is supporting you and your Swift.

To those of you who have donated to the SMF, a **Very Special Thank You** and to the others we look forward to your support.

If any of you are interested in serving on the fundraising committee or have ideas on fundraising that may be successful please contact me or Scott Anderson.

The life of an International Airshow Pilot can be quite stressful....

How great is this, you land and someone puts a glass of Champagne in your hand. What a country! From the moment we were first contacted (thank you Steve Whittenberger, who called and asked if we could do this, whereby I answered, what time do you want us there) the excitement level went thru the roof. Just think, to be able to land a Swift at LeBourget 90 years after Lindberg's arrival, what a thrill.

Paul & Sandy Mercandetti, Jerry Kirby and Don Abbott were invited by our French Swifters to accompany them on an incredible journey to The 52nd International Paris Airshow and from there to the beaches of Normandy and Mont St. Michel. The Paris Airshow is the oldest in the world held every other year going back 104 years and still going strong. There are about 20 Swifts in Europe and we were able to scramble 7 for this mission. Our fearless leader was none other than the world famous aviator **Guillaume Feral** and his team of Fabulous Flying Frenchmen: **Cedric Lavocat, Alain deValence, Bertrand Nobilliaux, Anthony Bezar, Cedric Ruet, Christophe Chicouene, Francios Alagner, Frederic Grandmougin, Laurent Chicouene, Oliver Lorino, and Romain Deveaux**. Also accompanying this motley group was astronaut Albert Worden of Apollo 15 fame, TK Kallman an international Airshow promoter and the infamous Gilles Founier who is not only the CEO of The Paris Airshow but an amazing and wonderful host with the most. Gilles was responsible for vectoring us to the various pavilions each evening where copious amounts of Champagne were consumed and provided us with a video copy of our formation arrival, with smoke of course, into LeBourget. There is not enough that can be said of the hospitality that was shown to us by our French hosts but I would be remiss if I didn't



expend on the efforts put forth by Monsieur Guillaume. He is THE one that coordinated and made possible this whole trip. He arranged our transportation, our accommodations and there is not a soul in France that does not know and love this man. Did I mention that he was injured in a glider accident when he was 25 which left him without the use of both legs? Did I mention that he is a flight instructor and teaches other paraplegics how to fly? And, did I mention that he is back up aerobatic pilot on a Cap 10 for one of his former female students who is also a paraplegic. He designed his and other aircraft with special adaptations to enable paraplegics to fly with hand controls while leaving the regular controls intact? He operates the stick and brakes with his left hand and the throttle and rudders with his right hand. Let me take this opportunity to tell you of his next adventure, an around the world flight in a light single engine aircraft. Those of you who have had the chance to meet him know what an inspiration he is.

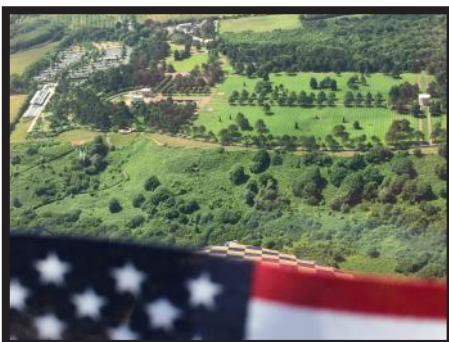


Guillaume Feral with his Swift F-AZTN

I wish there was enough room to show you all of the pictures that we took because we did so much in so little time and before we knew it, it was over. We did take one extra day to drive three and one half hours east of Paris to the Lorraine American Cemetery and Memorial in eastern France to pay our respects to those who made the Ultimate Sacrifice for us in World War II and especially to Sandy's uncle, Captain Bill Mary who was a B-17 pilot and was shot

down over Germany and buried there. Incidentally, the Mary family is from the Lorraine area before immigrating to the United States.

As with all of our gatherings we are indeed indebted to the wives and girlfriends of our group who's behind the scenes efforts make everything possible. And lovely ladies and hostesses they are. We know how blessed we are here in the states to have an airplane like the Swift that has brought us together, well I can tell you that the spirit is alive and well in France. We look forward to the day that we can reciprocate the hospitality shown to us but it's going to be tough to come close. We can try this summer as some of the guys will be joining us in Athens TN this June for our annual convention , I hope many of you will be there to warmly greet them, I know I will.



Many thanks to Paul and Sandy Mercandetti for this great article and photos!

Globe Aircraft/Swift Archives

Below is a photo of Ester Aube of AirCorps Library, during one of the scanning sessions here at headquarters.

Ester is the one who scanned all of our technical and historical drawings and data that are now preserved and protected in digital form.

She has become quite a fan of the Swift and sent this photo on the **right** to us of another aircraft that Globe was involved in building. It further documents Globe Aircraft's contribution to the world of aviation prior to the Swift.

Ester has also represented Swift on the AirCorps Aviation website. Everyone should visit their site to learn about this amazing company.

Swift National AirCorps Library Forum

Ester is planning to be at Swift National this year to conduct a forum on AirCorps and the Library that she is building containing the data of many aircraft including warbirds and other classics. It is truly an a "site" to behold! I'm sure many of you will be fascinated and thoroughly enjoy her presentation. Don't miss it!



TWELVE MONTHS
of EXCEPTIONAL PRODUCTION!

KEEPING PACE....

THE story of America's wartime industrial accomplishments is one that will live long after victory has been won. Keeping pace in the production race to equip the battle forces of the United States has been a severe test for both men and machines, but wartime industry has answered the call to arms with the needed production. Globe Aircraft Corporation is proud to be among

the group of American manufacturers which have made good on wartime assignments. Back of the twelve-month record of production just completed by Globe is a force of efficient workers who share the commendations the company has received from Government authorities for meeting or exceeding every monthly production quota.

Managers of the AT-10 Advanced Trainer and The Swift GC-1

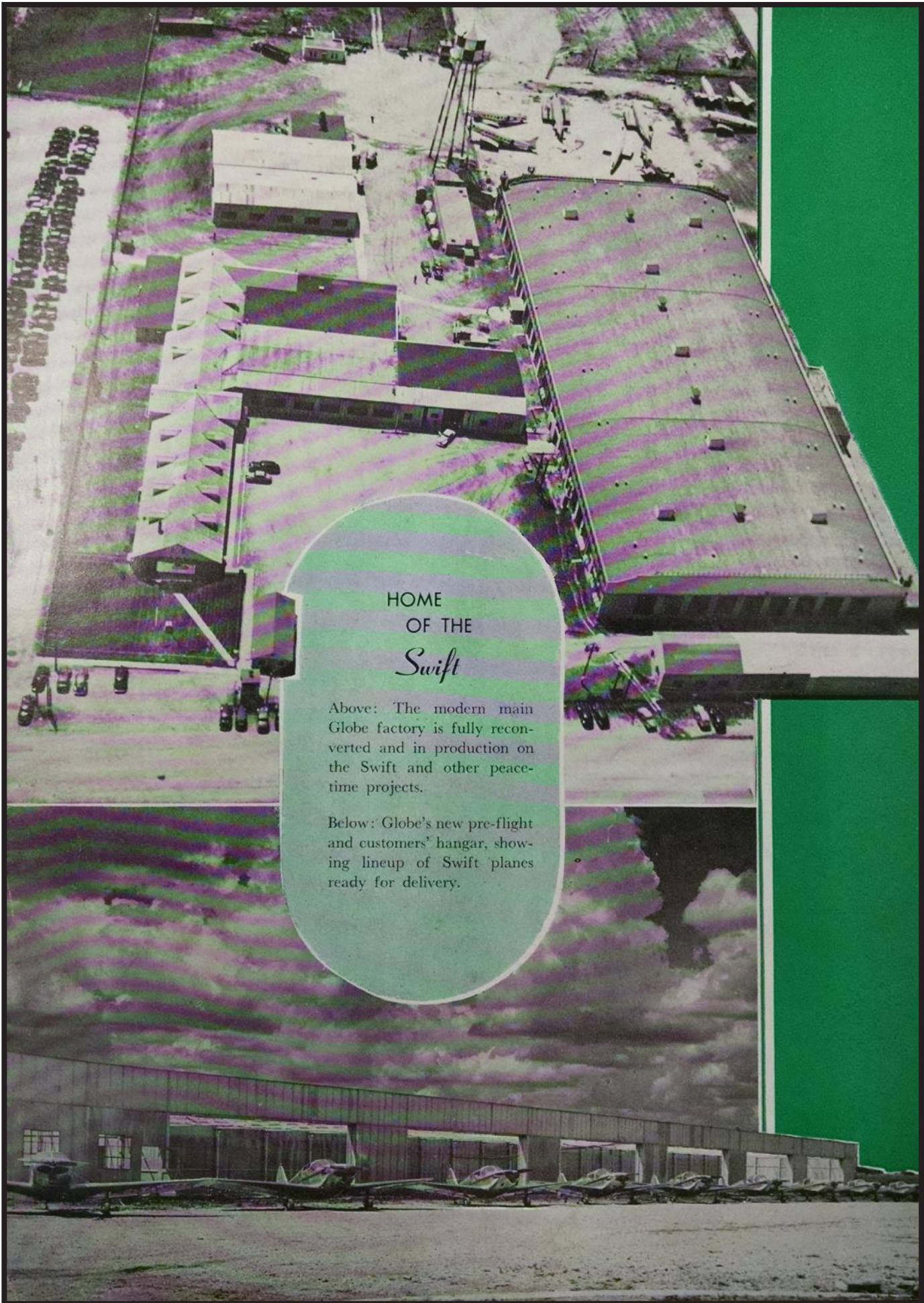
GLIDE AIRCRAFT CORPORATION FORT WORTH, TEXAS, U. S. A.
★ ★ ★ ★



Note: Swift Formation Members!

Don't forget to submit your 2018 SFC Proficiency forms and \$15.00 dues.

Dues and Proficiency Forms are required in order to obtain your 2018 SFC card.



HOME
OF THE
Swift

Above: The modern main Globe factory is fully recon-verted and in production on the Swift and other peace-time projects.

Below: Globe's new pre-flight and customers' hangar, showing lineup of Swift planes ready for delivery.

